

Seniors seeking an active lifestyle or the quiet comfort of a caring community will find both at **Pacific Pines Phase II & III**.

Resident Services staff coordinate planned activities, wellness programs and social events to promote a healthy living environment and optimal quality of life.

At **Pacific Pines Phase II & III**, you are never alone. Our coordinators have an array of resources. They work with community providers to tailor services to the specific needs of eligible residents.



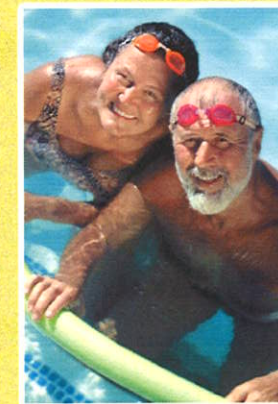
Mission: **Nevada H.A.N.D., Inc.** improves the lives of low-income individuals by providing affordable housing solutions and supportive services.

www.nevadahand.org



Pacific Pines Phase II & III Senior Apartments
132 E. Pacific Avenue
Henderson, NV 89015

Pacific Pines Phase II & III *Senior* Apartments



130 & 134 E. Pacific Avenue
Henderson, NV 89015
(702) 565-8165



HAND Property Management Co.
An Affiliate of Nevada H.A.N.D., Inc.



Pacific Pines Phase II & III *Senior* Apartments



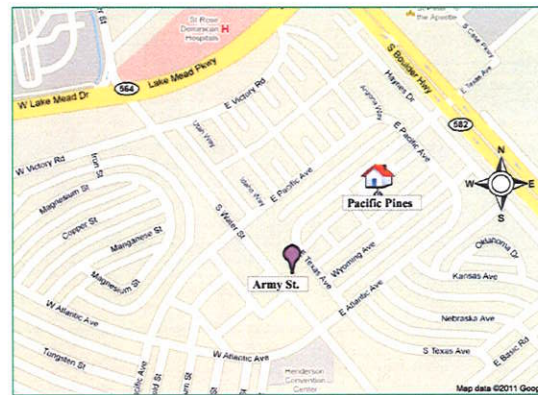
Pacific Pines Phase II & III has made available the following services and amenities for your convenience and enjoyment.

Home Features:

- Central heating and air conditioning
- Spacious closets
- Patio / Balcony with storage
- Ceiling fans

Community Features:

- Computer center with free high speed internet
- 24 hour emergency maintenance
- Controlled access entry
- Elevator access
- Sparkling pool and spa
- Fitness center / Beauty salon
- Community room with kitchen
- Library / Game room
- Sun room with panoramic view
- Pet friendly (under 20 lbs.)
- Free laundry



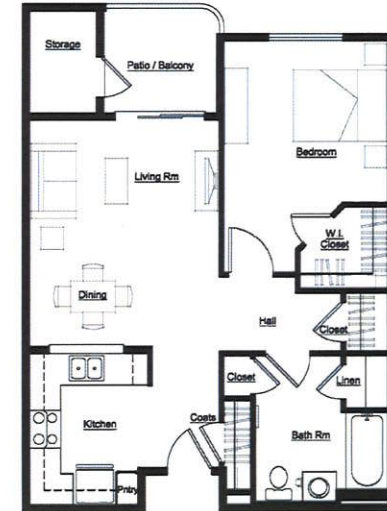
Driving Directions:

Take Bruce Woodbury Beltway (CR-215) to E. Lake Mead Pkwy
Continue on E. Lake Mead Pkwy to Water St.
Head south (take a right) on Water St. to Army St.
Head east (take a left) on Army St.
Pacific Pines is straight ahead

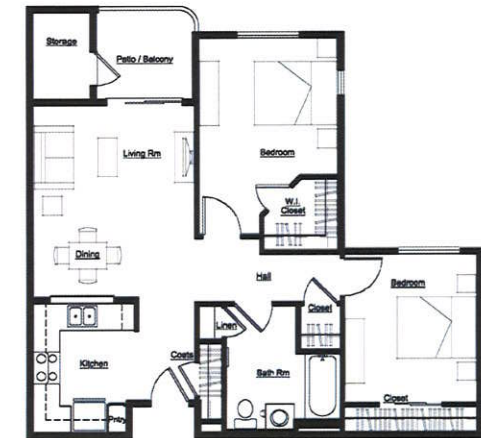
Neighborhood Amenities:

Walgreens Pharmacy, Wal-Mart Supercenter, Target, Marshalls, Wells Fargo Bank, Bank of America, Rainbow Casino, Eldorado Casino and St. Rose de Lima Hospital

Pacific Pines Phase II & III - Floor Plan 1
1 Bedroom 1 Bath Approx. 789 S.F.
Rent \$ _____



Pacific Pines Phase II & III - Floor Plan 2
2 Bedroom 1 Bath Approx. 958 S.F.
Rent \$ _____



Prices subject to change at owner's discretion.
Income restrictions do apply.