

Seniors seeking an active lifestyle or the quiet comfort of a caring community will find both at **Westcliff Pines**. Resident Services staff coordinate planned activities, wellness programs and social events to promote a healthy living environment and optimal quality of life.

*At Westcliff Pines*, you are never alone. Our coordinators have an array of resources. They work with community providers to tailor services to the specific needs of eligible residents.



Mission: **Nevada H.A.N.D., Inc.** improves the lives of low-income individuals by providing affordable housing solutions and supportive services.

[www.nevadahand.org](http://www.nevadahand.org)



# Westcliff Pines *Senior* Apartments



8206 Silver Sky Drive  
Las Vegas, NV 89145  
(702) 417-2757



**HAND Property Management Co.**  
An Affiliate of Nevada H.A.N.D., Inc.

Westcliff Pines Senior Apartments  
8206 Silver Sky Drive  
Las Vegas, NV 89145





# Westcliff Pines *Senior* Apartments



Westcliff Pines has made available the following services and amenities for your convenience and enjoyment.

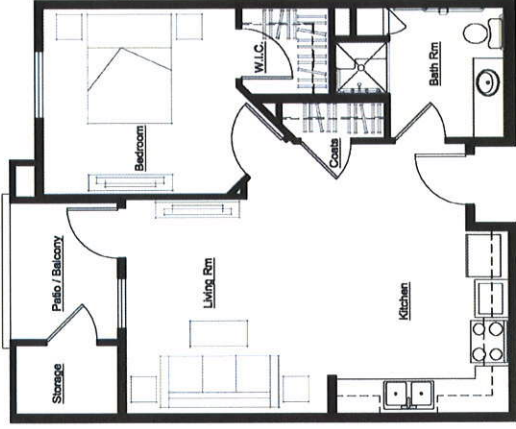
## Home Features:

- Central heating and air conditioning
- Free utilities (excludes telephone and cable services)
- Patios / Balconies
- Walk-in shower
- Ceiling fans

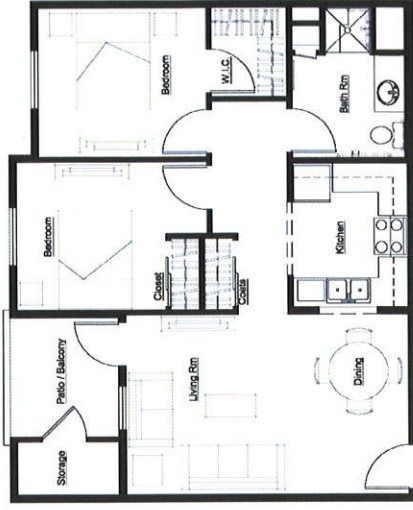
## Community Features:

- Computer center with free high speed internet
- 24 hour emergency maintenance
- Controlled access entry
- Covered parking
- Sparkling pool and spa
- Fitness center / Beauty salon
- Community room with kitchen
- Library / Game room
- Media room
- Pet friendly (under 20 lbs.)
- Free on-site laundry

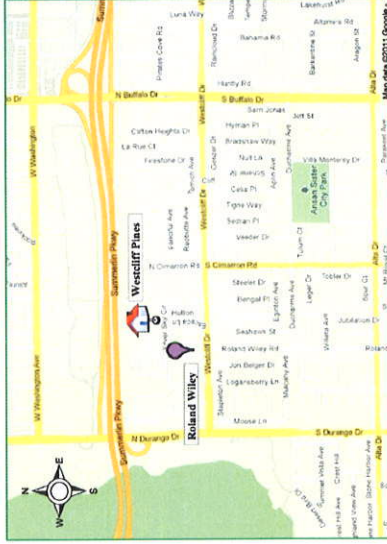
Westcliff Pines - Floor Plan 1  
1 Bedroom 1 Bath Approx. 723 S.F.  
Rent \$ \_\_\_\_\_



Westcliff Pines - Floor Plan 2  
2 Bedroom 1 Bath Approx. 920 S.F.  
Rent \$ \_\_\_\_\_



Prices subject to change at owner's discretion.  
Income restrictions do apply.



## *Driving Directions:*

From US 95 take Summerlin Pkwy. to Buffalo Dr.  
Take a left onto Buffalo Dr. Make a right onto  
Westcliff Drive. Turn right onto Roland Wiley Rd.  
Make a right onto Silver Sky Dr. Westcliff Pines  
is the white building on the left hand side.

## *Neighborhood Amenities:*

K-Mart, Lowe's, Bazel Café, Green Valley  
Grocery, Advanced Care Pharmacy, Shell,  
Stop n Shop, Angel Park, Boca Park  
and Tivoli Village