



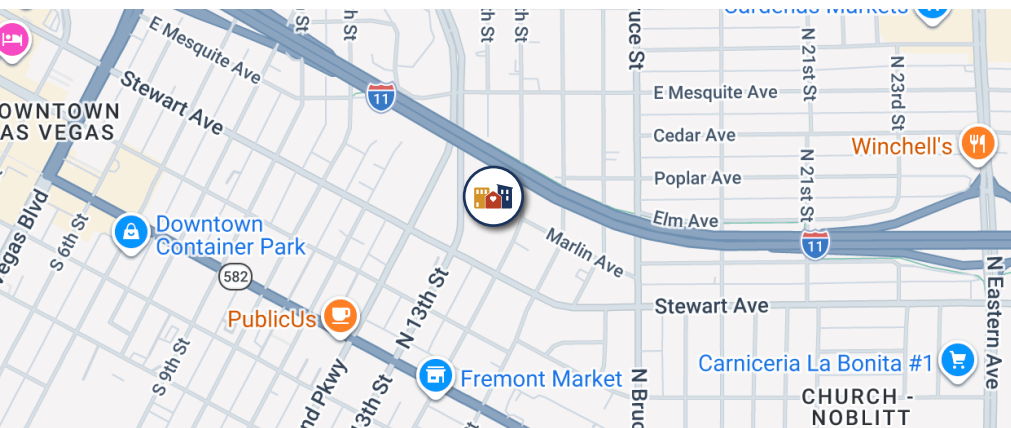
# STEWART PINES I&II

## SENIOR APARTMENTS



### PROPERTY FEATURES

- 24-Hour Emergency Maintenance
- On-Site Resident Services
- Water, Trash and Sewer Included
- Online Payments
- Smoke-Free Community
- Computer Lab
- Covered Parking
- Fitness Center
- Community Rooms
- Library
- Free Food Pantry



1351 East Stewart Avenue  
Las Vegas, NV 89101

**(702) 598-0420**  
TTY-(800) 326-6868

Property hours may vary

UPDATED: 6/4/2026



For more info/to schedule a visit, scan the QR code or e-mail  
[stewartpineslv@nevadahand.org](mailto:stewartpineslv@nevadahand.org)





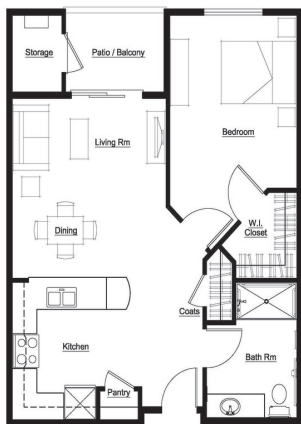
UNIT IMAGES ARE VIRTUALLY STAGED



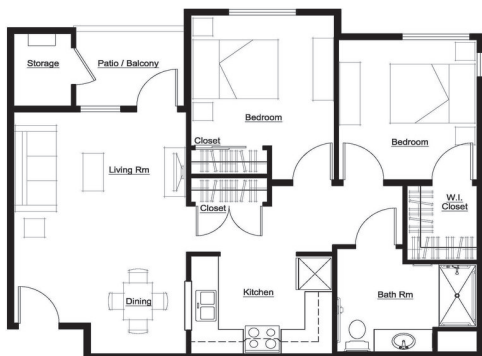
# STEWART PINES I&I

## SENIOR APARTMENTS

**RENT AND INCOME REQUIREMENTS**  
+ FLOOR PLANS



1 BED / 1 BATH • 611-659 Sq. Ft.				
Annual Gross Income Limits*				
MONTHLY RENT	TOTAL # OF UNITS	MINIMUM	MAXIMUM	
<b>\$537</b>	5	\$12,888	1-Person	\$22,200
			2-Person	\$25,350
<b>\$735</b>	31	\$17,640	1-Person	\$29,560
			2-Person	\$33,760
<b>\$811</b>	12	\$19,464	1-Person	\$36,950
			2-Person	\$42,200



2 BED / 1 BATH • 779-794 Sq. Ft.				
Annual Gross Income Limits*				
MONTHLY RENT	TOTAL # OF UNITS	MINIMUM	MAXIMUM	
<b>\$651</b>	3	\$15,624	1-Person	\$22,200
			2-Person	\$25,350
<b>\$889</b>	33	\$21,336	1-Person	\$29,560
			2-Person	\$33,760
<b>\$981</b>	37	\$23,544	1-Person	\$36,950
			2-Person	\$42,200

### APPLICATION INFORMATION

Section 8 Vouchers Accepted\*\*

**Screening Fee:**  
\$26 per Adult HH Member  
\$17 for Live-in-Aide

**Holding Deposit:**  
\$250

**Security Deposit:**  
\$500 or up to 1 Month Rent  
on Conditional Credit

**Pet Fee:**  
\$250 per pet  
Weight & Breed Restrictions Apply

\*Minimum income requirement does not apply to Section 8 holders.

